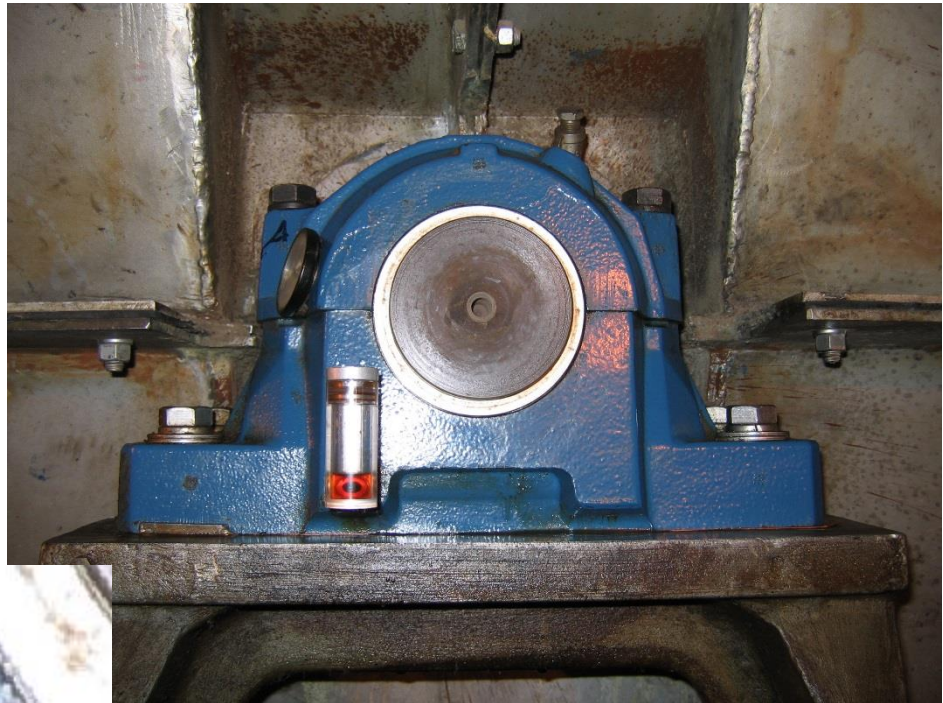


Pillow Block sight glass

Make guesswork a thing of the past!

Designed with the operator in mind

- Innovative, easy to read oil sight glass gives true indication of oil level and condition
- High strength Lexan resin tolerates operating temperatures up to 160°F
- Ample height of 2 ¼" from center of drain plug to top of glass
- Comes with standard ¼", 3/8" or ½" NPT swivel fittings
- Long lasting clarity and chemical resistance



Eagle-eye sight glass # NTP503-LLG-VR-2N

1/8" swivel # 1404-02-04 (1/8 x 1/4 swivel union)

¼" swivel # 1404-04-04 (1/4 x 1/4 swivel union)

3/8" swivel # 1404-06-04 (3/8 x 1/4 swivel union)

1/2" swivel # 1404-08-04 (1/2 x 1/4 swivel union)

¾" swivel #1404-12-12 plus 5406-12-04 reducer bushing

1" swivel #1404-16-16 plus 5406-16-04 reducer bushing

SAF/SAFD-drain plug size

509 to 513-1/8" NPT

515-1/4"

516 to 522-3/8"

524 to 526- ½"

528 to 536- ¾"

538 to 544- 1"

Installation tip: Make sure you place the two sight glasses on the same side of the block on the high dynamic side. For more detailed information go to page 6 and 7 of this fan and blower technical paper.

<http://1f4.643.myftpupload.com/wp-content/uploads/2016/06/fan-and-blower-paper.pdf>