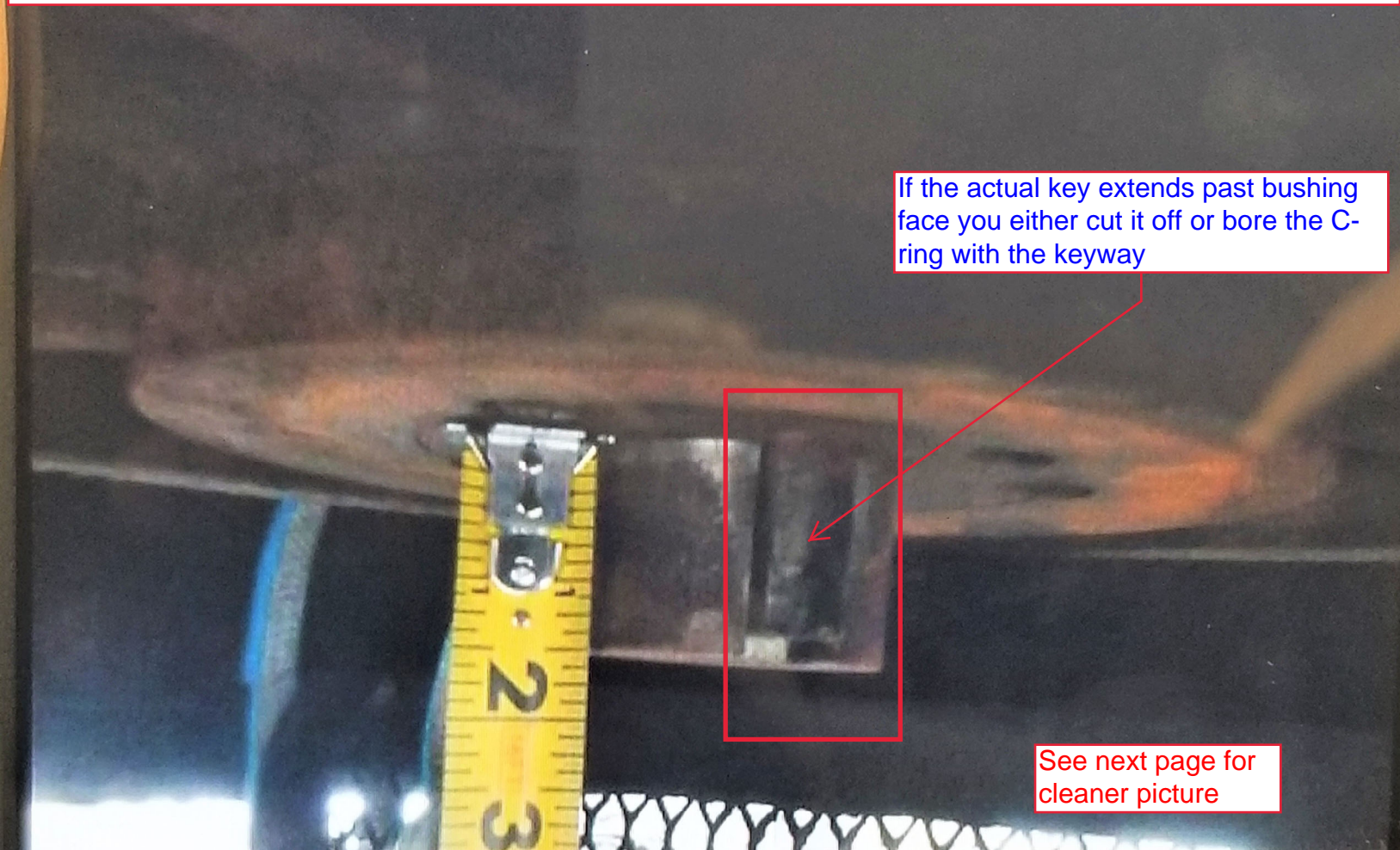


This page is meant to help you decide on how to mount the DG-II kit properly. This picture shows a fan pulley bottom with a taper lock bushing with a shaft extended past the bushing face by 1 3/4".



If the actual key extends past bushing face you either cut it off or bore the C-ring with the keyway

See next page for cleaner picture

With this style Taper-lock bushing you must use the universal spacer that comes in the kit as per instructions **if you plan to mount directly to the pulley bushing**. But as you have a shaft extended down (past bushing face) you have a few options.

1. You can move the fan pulley down to the end (or to 7/8" from end) which might need a motor pulley adjustment
2. You can cut the fan shaft off flush with bushing or within 7/8" from bushing face
3. You can mount with the shaft where it is but as per instructions you will need to buy extra universal spacers (I do not like this idea as much as bullet 4). Each spacer is 1/2" thick then out flange allows for 1/2" fan shaft inside.
4. You can buy the C-ring kit and not move anything. The C-ring kit is 1 1/2" wide so it will fit directly onto this shaft end.

See instructions for field boring required to C-ring. Once the C-ring is in place simply mount the DG-II kit to the C-ring as per instructions and video link below.

<https://youtu.be/CVn1W5XiakA?t=1>

If this was my installation I would cut the extended key (sticking down past bushing face) as it is not a good practice to have any key sticking down past pulley. The C-ring design will hold full-force without a key-way but if you elect to cut a key-way into C-ring make it opposite the band saw cut. Nick Agius

Ideal C-ring mount opportunity

